

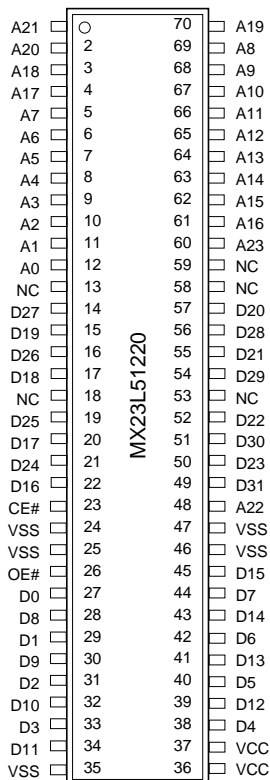
**512M-BIT (16M x 32) MASKROM WITH PAGE MODE
(SSOP ONLY)
(for socket solution only)**

FEATURES

- Bit organization
 - 16M x 32 (double word mode) only
- Fast access time
 - Random access: 90ns (max.)
 - Page access: 30ns (max.)
- Page size
 - 8 double words per page
- Current
 - Operating: 80mA (max.) @ 5MHz
 - Standby: 30uA (max.)
- Supply voltage : 3.3V ± 10%
- Package
 - 70 pin SSOP
- Temperature
 - 0~70°C

PIN CONFIGURATION

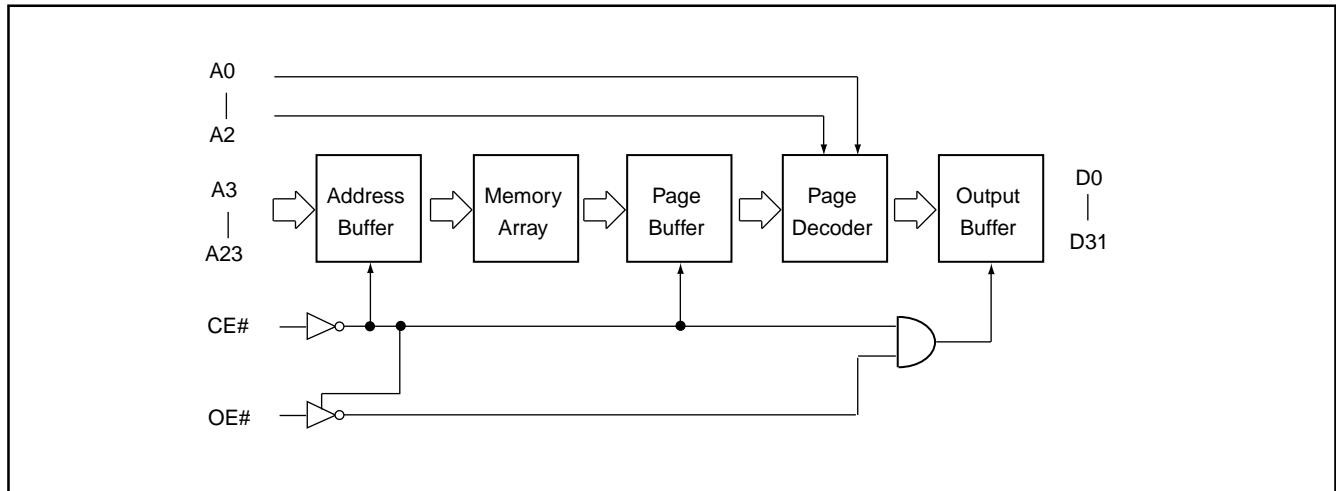
70 PIN SSOP



PIN DESCRIPTION

Symbol	Pin Function
A0~A23	Address Inputs
D0~D31	Data Outputs
CE#	Chip Enable Input
OE#	Output Enable Input
VCC	Power Supply Pin
VSS	Ground Pin
NC	No Connection (pin 18 and 53 must be floating, not connected to VCC or GND)

BLOCK DIAGRAM



MODE SELECTION

CE#	OE#	D0~D31	Mode	Power
H	X	High Z	-	Stand-by
L	H	High Z	-	Active
L	L	D0~D31	Double Word	Active

ORDER INFORMATION

Part No.	Access Time	Package
MX23L51220MC-90	90ns	70 pin SSOP
MX23L51220MC-10	100ns	70 pin SSOP

ABSOLUTE MAXIMUM RATINGS

Item	Symbol	Ratings
Voltage on any Pin Relative to VSS	VIN	-0.3V to 3.9V
Ambient Operating Temperature	Topr	0°C to 70°C
Storage Temperature	Tstg	-65°C to 125°C

DC CHARACTERISTICS (Ta = 0°C ~ 70°C, VCC = 3.3V ± 10%)

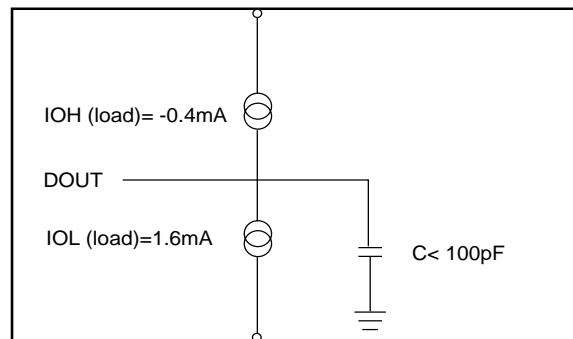
Item	Symbol	MIN.	MAX.	Conditions
Output High Voltage	VOH	2.4V	-	IOH = -0.4mA
Output Low Voltage	VOL	-	0.4V	IOL = 1.6mA
Input High Voltage	VIH	2.2V	VCC+0.3V	
Input Low Voltage	VIL	-0.3V	0.2xVCC	
Input Leakage Current	ILI	-	10uA	0V, VCC
Output Leakage Current	ILO	-	10uA	0V, VCC
Operating Current	ICC	-	80mA	f=5MHz, all output open CE#=VIL(Chip Enable) OE#=VIH(Output Disabled)
Standby Current (TTL)	ISTB1	-	1mA	CE# = VIH
Standby Current (CMOS)	ISTB2	-	30uA	CE# > VCC-0.2V
Input Capacitance	CIN	-	20pF	Ta = 25°C, f = 1MHZ
Output Capacitance	COUT	-	10pF	Ta = 25°C, f = 1MHZ

AC CHARACTERISTICS (Ta = 0°C ~ 70°C, VCC = 3.3V ± 10%)

Item	Symbol	23L51220-90		23L51220-10	
		MIN.	MAX.	MIN.	MAX.
Read Cycle Time	tRC	90ns	-	100ns	-
Address Access Time	tAA	-	90ns	-	100ns
Chip Enable Access Time	tCE	-	90ns	-	100ns
Page Mode Access Time	tPA	-	30ns	-	30ns
Output Enable Time	tOE	-	30ns	-	30ns
Output Hold After Address	tOH	0ns	-	0ns	-
Output High Z Delay	tHZ	-	20ns	-	20ns

AC Test Conditions

Input Pulse Levels	0.4V~ 2.8V
Input Rise and Fall Times	10ns
Input Timing Level	1.5V
Output Timing Level	1.5V
Output Load	See Figure



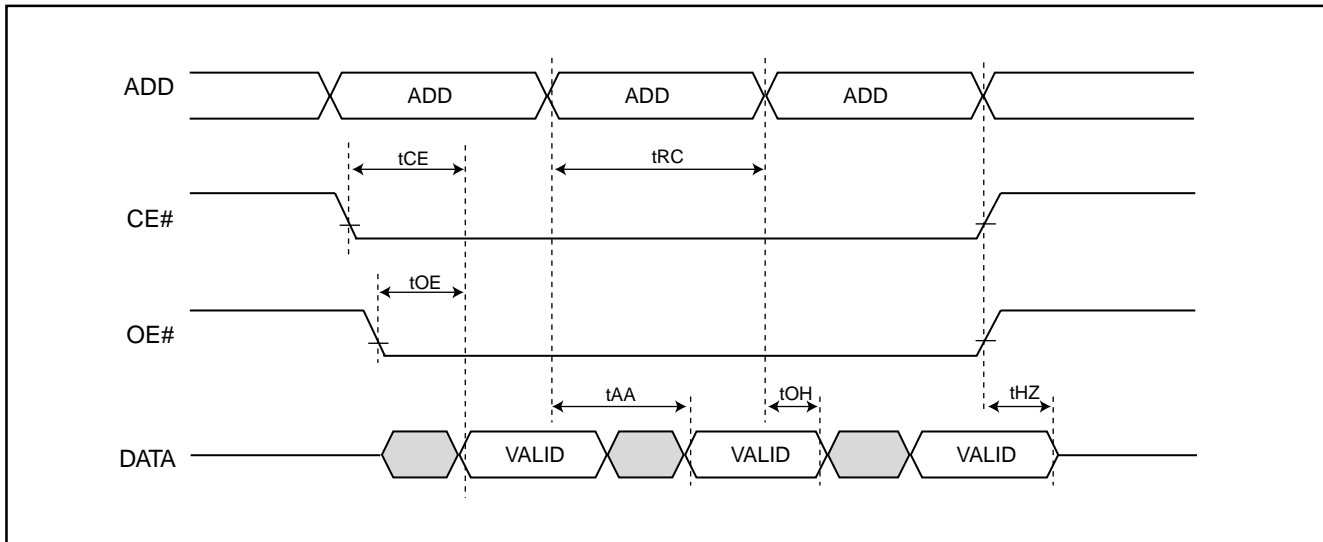
Note: No output loading is present in tester load board.

Active loading is used and under software programming control.

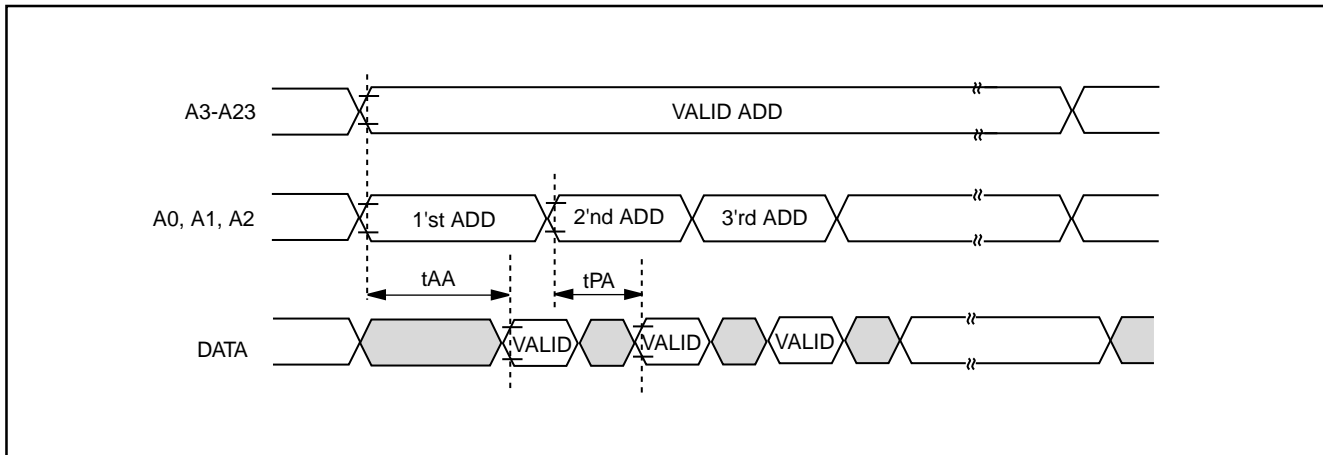
Output loading capacitance includes load board's and all stray capacitance.

TIMING DIAGRAM

RANDOM READ

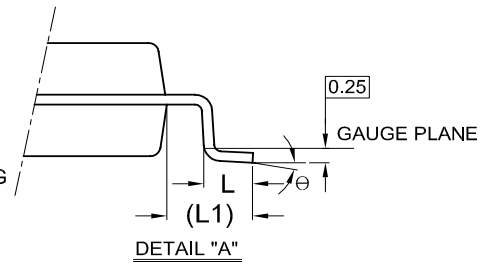
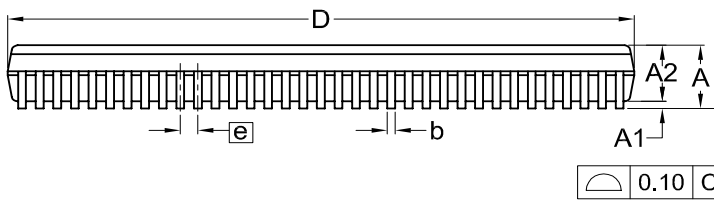
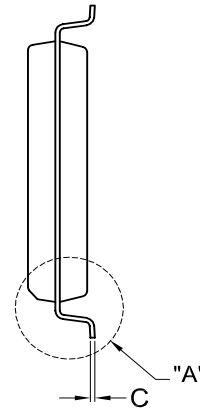
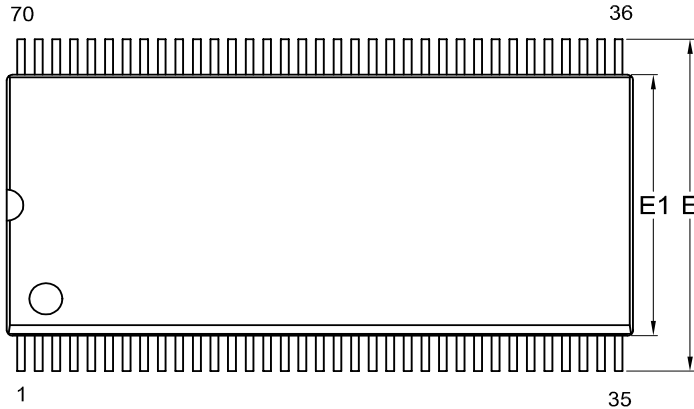


PAGE READ



PACKAGE INFORMATION

Title: Package Outline for SSOP 70L (500MIL)



Dimensions (inch dimensions are derived from the original mm dimensions)

SYMBOL		A	A1	A2	b	C	D	E	E1	e	L	L1	θ
UNIT													
mm	Min.	---	0.10	2.56	0.30	0.17	28.37	15.73	12.47		0.61	1.51	0
	Nom.	---	0.15	2.69	0.35	0.20	28.50	16.03	12.60	0.80	0.81	1.71	5
	Max.	3.05	0.23	2.82	0.40	0.25	28.63	16.33	12.73		1.01	1.91	10
Inch	Min.	---	0.004	0.101	0.012	0.007	1.117	0.619	0.491		0.024	0.060	0
	Nom.	---	0.006	0.106	0.014	0.008	1.122	0.631	0.496	0.031	0.032	0.068	5
	Max.	0.120	0.009	0.111	0.016	0.010	1.127	0.643	0.501		0.040	0.075	10

DWG.NO.	REVISION	REFERENCE			ISSUE DATE
		JEDEC	EIAJ		
6110-1503	5				11-26-'03



REVISION HISTORY

Revision No.	Description	Page	Date
1.1	Modify supply voltage-- 3.3V \pm 5% for temporary period, 3.3V \pm 10% after new product available	P1,2,3	JUL/11/2003
1.2	1. Removed "Preliminary" on page 1 2. Operating : 60mA(max.) --> 80mA(max.) 3. Input pulse levels : 0.4V~2.4V --> 0.4V~2.8V	P1 P1,3 P3	FEB/25/2004
1.3	1. Added "for socket solution only" on page 1	P1	SEP/02/2004
1.4	1. Added statement	P7	NOV/07/2006



MACRONIX
INTERNATIONAL Co., LTD.

MX23L51220

Macronix's products are not designed, manufactured, or intended for use for any high risk applications in which the failure of a single component could cause death, personal injury, severe physical damage, or other substantial harm to persons or property, such as life-support systems, high temperature automotive, medical, aircraft and military application. Macronix and its suppliers will not be liable to you and/or any third party for any claims, injuries or damages that may be incurred due to use of Macronix's products in the prohibited applications.

MACRONIX INTERNATIONAL Co., LTD.

Headquarters

Macronix, Int'l Co., Ltd.
16, Li-Hsin Road, Science Park,
Hsinchu, Taiwan, R.O.C.
Tel: +886-3-5786688
Fax: +886-3-5632888

Macronix America, Inc.

680 North McCarthy Blvd.
Milpitas, CA 95035, U.S.A.
Tel: +1-408-262-8887
Fax: +1-408-262-8810
Email: sales.northamerica@macronix.com

Macronix Japan Cayman Islands Ltd.

NKF Bldg. 5F, 1-2 Higashida-cho,
Kawasaki-ku Kawasaki-shi,
Kanagawa Pref. 210-0005, Japan
Tel: +81-44-246-9100
Fax: +81-44-246-9105

Macronix (Hong Kong) Co., Limited.

702-703, 7/F, Building 9,
Hong Kong Science Park,
5 Science Park West Avenue, Sha Tin, N.T.
Tel: +86-852-2607-4289
Fax: +86-852-2607-4229

[http : //www.macronix.com](http://www.macronix.com)

Taipei Office

Macronix, Int'l Co., Ltd.
19F, 4, Min-Chuan E. Road, Sec. 3,
Taipei, Taiwan, R.O.C.
Tel: +886-2-2509-3300
Fax: +886-2-2509-2200

Macronix Europe N.V.

Koningin Astridlaan 59, Bus 1
1780 Wemmel Belgium
Tel: +32-2-456-8020
Fax: +32-2-456-8021

Singapore Office

Macronix Pte. Ltd.
1 Marine Parade Central
#11-03 Parkway Centre
Singapore 449408
Tel: +65-6346-5505
Fax: +65-6348-8096